

JUST LISTED



NEIGHBOURHOOD

8200 Birchmount Rd

Markham, ON L3R 9W1

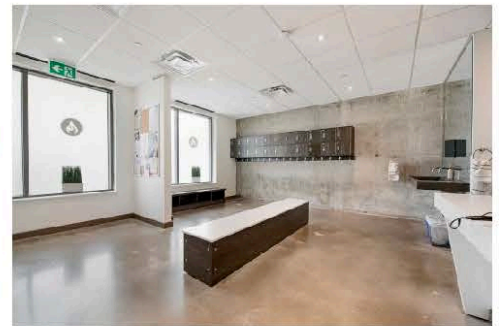
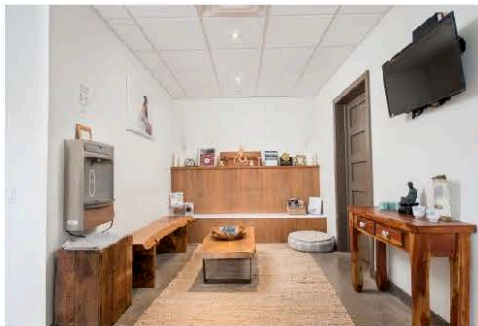
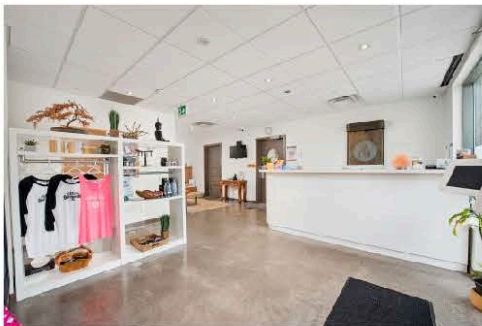
\$2,489,900

Usable Area:	3,395 Sqft.
Present Use:	Yoga Studio
Property Taxes:	\$28,567.76
Maintenance Fees:	\$2,171.37
Legal Description:	Unit 39, 40, 41, Level 1, Yscp 1264

View the video: <http://www.8200Birchmount.com> | |
MLS#N4304266

Property Description

Unique Investment, Own Approx 100 Linear Ft, All Glass, Of Retail Space On Birchmount Rd Frontage At Hwy 7 In A Thriving Commerical/Residential Hub Across From 170,000 Sq Ft Uptown Square Retail Mall With Whole Food, Bmo, Rbc, Lcbo, Public Transit, And Res Condos All Around And Many More To Be Built. See Attached List Of City Of Markham Permitted Uses. Medical, Dentistry & Veterinary Uses Also Noted From City, Must See Virtual Tour. Uncomparable Opportunity!



Jason Lau
416.277.6776

CENTURY 21 Leading Edge
Realty, Brokerage Inc.
#214-18 Wynford Dr, Toronto
Office: 416.686-1500



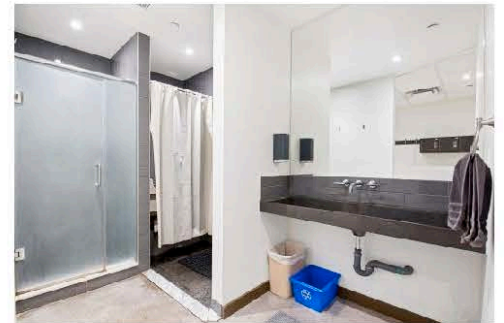
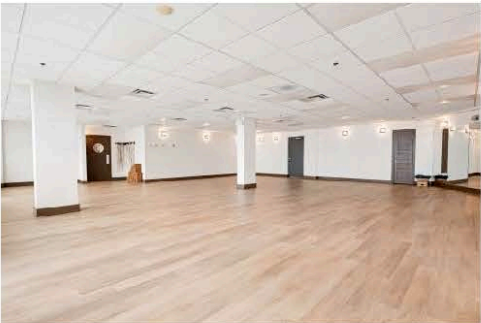
Not intended to solicit properties currently listed for sale or buyers under contract. The trademarks REALTOR®, REALTORS® and the REALTOR® logo are controlled by The Canadian Real Estate Association (CREA) and identify real estate professionals who are members of CREA. Used under license. The trademarks MLS®, Multiple Listing Service® and the associated logos are owned by The Canadian Real Estate Association (CREA) and identify the quality of services provided by real estate professionals who are members of CREA. Used under license. Independently Owned and Operated. ®/™ trademarks owned by Century 21 Real Estate LLC used under license or authorized sub-license. © 2018 Century 21 Canada Limited Partnership.



8200 Birchmount Rd

\$2,489,900

View the video: <http://www.8200Birchmount.com> |
MLS# N4304266



Nick Malakovski
416.705.6456

CENTURY 21 Leading
Edge Realty, Brokerage
Inc. #214-18 Wynford Dr,
Toronto



Not intended to solicit properties currently listed for sale or buyers under contract. The trademarks REALTOR®, REALTORS® and the REALTOR® logo are controlled by The Canadian Real Estate Association (CREA) and identify real estate professionals who are members of CREA. Used under license. The trademarks MLS®, Multiple Listing Service® and the associated logos are owned by The Canadian Real Estate Association (CREA) and identify the quality of services provided by real estate professionals who are members of CREA. Used under license. Independently Owned and Operated. ®/™ trademarks owned by Century 21 Real Estate LLC used under license or authorized sub-license. © 2018 Century 21 Canada Limited Partnership.